

Media overview

OKI Media Reference	OKIMED10
Manufacturer	Arjo Wiggins
Supplier	Antalis
Supplier Reference	UK 58783
Media Description	Popset Virgin Pulp Citrus FSC
Key Characteristics	Bright yellow, contains 30% post consumer waste
Size	A4 Cut Original 700x1000 mm
Weight	240 gsm
Thickness	0,32 mm
Warranty	See Media Statement for the details
IVP Media Proposition	Eye-catching media for retail promotions/pricing, single colour print on yellow background
IVP Print Applications	Eye-catching media for instore signage, promotions, etc.

Media Samples



OKIMED10 Antalis Back to School Sample.pdf



Printed on OKIMED10

Device Setup

Device	C824n, C824dn, C834nw, C834dnw, C844dnw
Firmware Level	A01.11_0_4 or later
CMF version	Not required
Media Type	PLAIN
Media Weight	UH3 (Ultra Heavy 3)
Paper Color Setting (PCS)	+2
Feeding Tray & Orientation	MPT (Multi Purpose Tray) LEF (Long Edge Feeding)
Output Bin	Face-up (Rear Output)
Main Limitations <i>Please refer to the MEDIA Statement for all the details</i>	Media must be printed from the MP Tray only and exit to the Rear output tray. If you experience excessive curl, please change device and/or driver settings so that the media exits into the top output tray.



MPT and LEF Feeding



Face-up – Rear Output

Sample Printing Instructions *These instructions are based on C844 model*

1 Driver

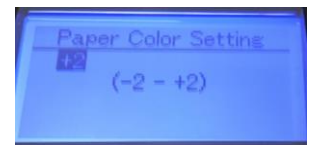
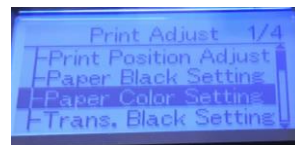
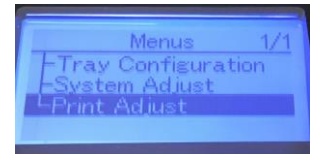
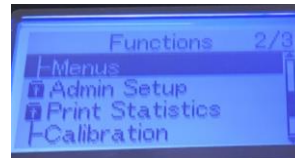
2 Device setup and preparation

Open MPT tray and put the media into the tray according to orientation described into «device setup» section

Set **Paper Color Setting** to the value «+2» as described into «device setup» section

The setting on the display panel of the printer is shown in the pictures

Postscript Version 1.0.1

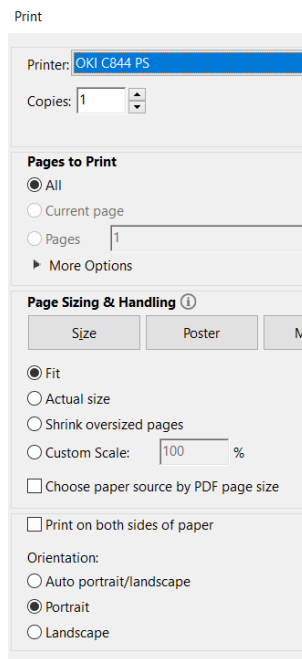


3 Printing the file

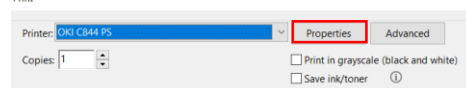
Open the PDF file with Acrobat Reader DC and click CTRL+P to open the PRINT interface

4 Select the C844 PS printer

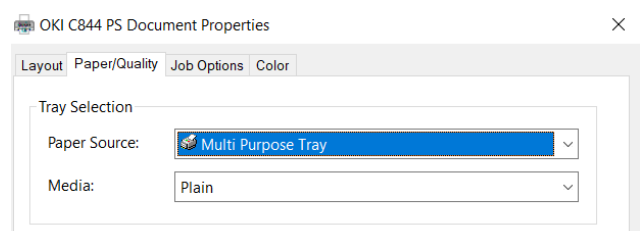
5 Configure the paper sizing & handling settings as show in the picture.



6 Click on Properties button to access to the PS driver settings

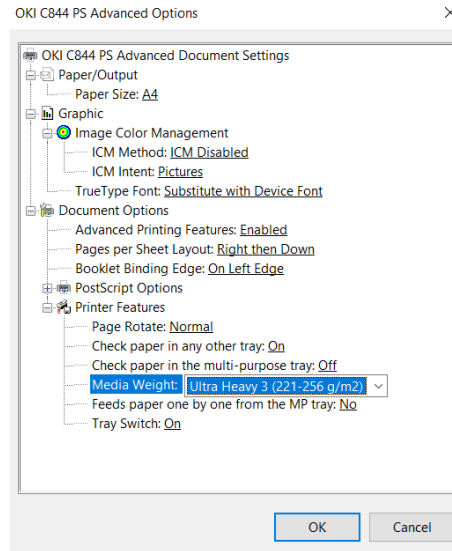


7 Access to the Paper/Quality tab to configure Paper Source and Media Type according to the setting specified into «device setup» section

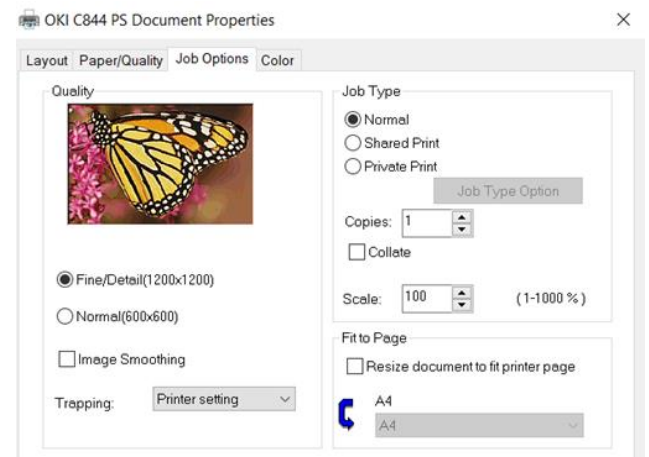


Sample Printing Instructions These instructions are based on C844 model

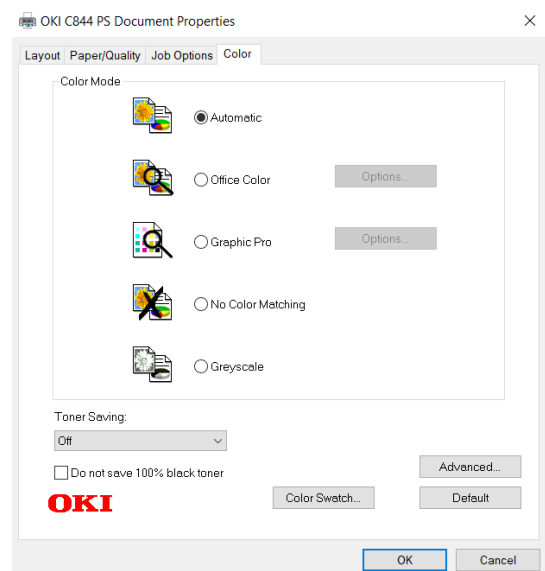
8 Please click on Advanced button to access to the interface to setup the Media Weight on Ultra Heavy 3 (UH3) and click OK to confirm the setting



9 Click Job Option tab to set «Quality» *Fine/Detail (1200x1200)* [only for the C844dnw]



10 Click Colour Tab to set Colour Mode on «Automatic» and «Toner Saving» on OFF



11 Click OK to register the setting and return to the Adobe Reader DC print Interface

12 Click «Print» button to send the data to the printer

