

# Floralabels Luggage tag (4 per sheet)



## Media overview

OKI Media Reference	OKIMED103
Supplier	Floralabels
Manufacturer	Kernow Print
Supplier Reference	#4161(193/143)
Media Description	Luggage Tag (4 per sheet) Premium Grade
Key Characteristics	Synthetic, waterproof, tear-proof, greaseproof, 145micron
Size	A4
Weight	193 gsm
Thickness	0,143 mm
Warranty	See Media Statement for the details
IVP Media Proposition	Synthetic media. Water and tear resistant, weatherproof
IVP Print Applications	Tags for luggage, retail marketing, clothing descriptions
Print Sample	

# Floralabels Luggage tag (4 per sheet)



## Device Setup

Device	C824n, C824dn, C834nw, C834dnw, C844dnw
Firmware Level	A01.11_0_4 or later
CMF version	01.E1.01 (UT6) 02.E1.02 (UT14) <b>Requires Custom Media File (CMF) installation.</b> All information about CMF is available on OKI Partnetwork. Please contact your OKI partner.
Media Type	USERTYPE 6 USERTYPE 14 (to improve mis-registration and for durable toward scratch)
Media Weight	N/A
Additional Settings	Paper Colour Setting -1
Feeding Tray & Orientation	MPT (Multi Purpose Tray) LEF (Long Edge Feeding)
Output Bin	Face-up (Rear Output)
Main Limitations <i>Please refer to the MEDIA Statement for all the details</i>	<p>The coating on the surface of the Media can occasionally cause sheets of Media to stick together and be fed through the paper path simultaneously. If this happens please feed the Media one sheet at a time.</p> <p>Media must be printed from the MP Tray only and exit to the Rear output tray.</p> <p>Print quality may not be as good around the perforations.</p> <p>If the image being printed goes across the perforation "dirty print" may occur on the printed output</p> <p>Colour density, especially on solid patterns, may not be reduced and appear lighter.</p> <p>After printing on this Media, vertical lines or dirty print may occur. If your printout has these issues, please do not use the printer for a few hours and it may recover so that this issue no longer appears.</p>

# Floralabels Luggage tag (4 per sheet)



## Sample Printing Instructions *These instructions are based on C844 model*

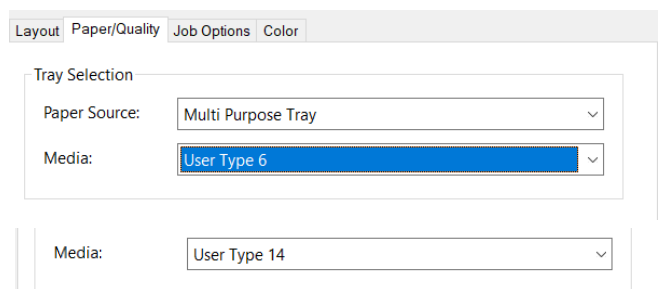
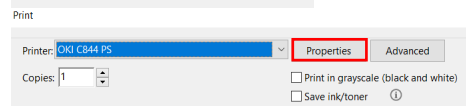
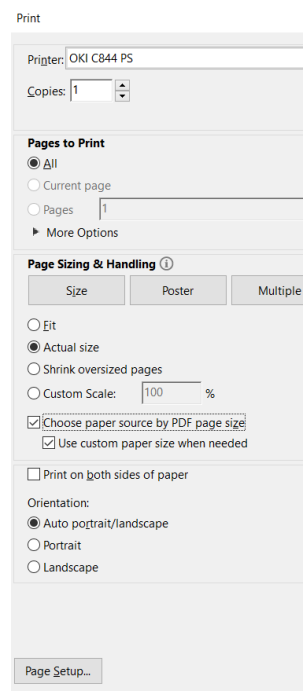
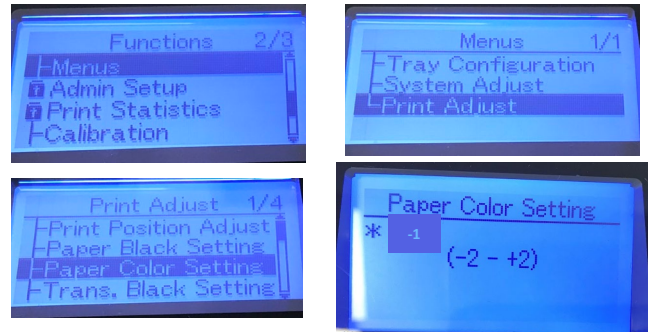
- 1 Driver**
- 2 Device setup and preparation**

Open MPT tray and put the media into the tray according to orientation described into «device setup» section  
Set **Paper Color Setting** to the value «-1» as described into «device setup» section  
The setting on the display panel of the printer is shown in the pictures
- 3 Printing the file**

Open the PDF file with Acrobat Reader DC and click CTRL+P to open the PRINT interface
- 4 Select the C844 PS printer**
- 5 Configure the paper sizing & handling settings as show in the picture.**
- 6 Click on Properties button to access to the PS driver settings**
- 7 Access to the Paper/Quality tab to configure Paper Source and Media Type (Usertype 6) according to the setting specified into «device setup» section**

*Please use USERTYPE 14 to improve mis-registration and for durable toward scratch*

Postscript Version 1.0.1

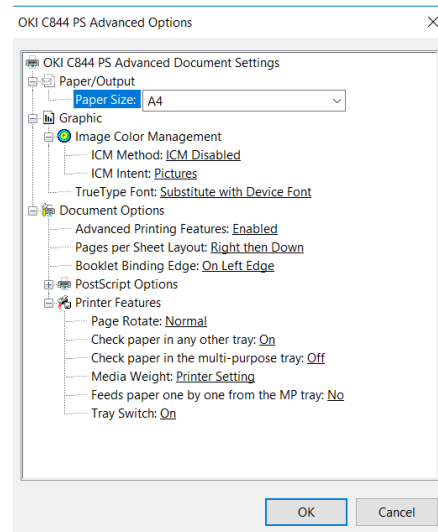


# Floralabels Luggage tag (4 per sheet)

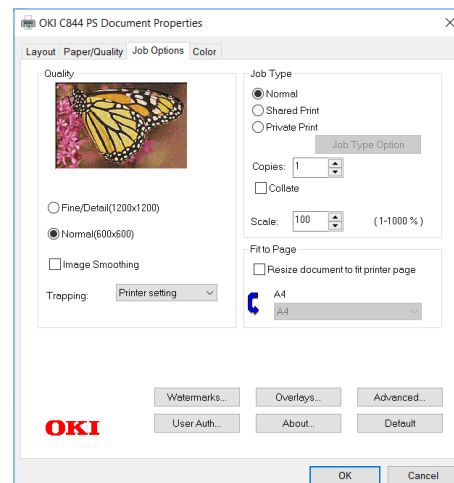


## Sample Printing Instructions These instructions are based on C844 model

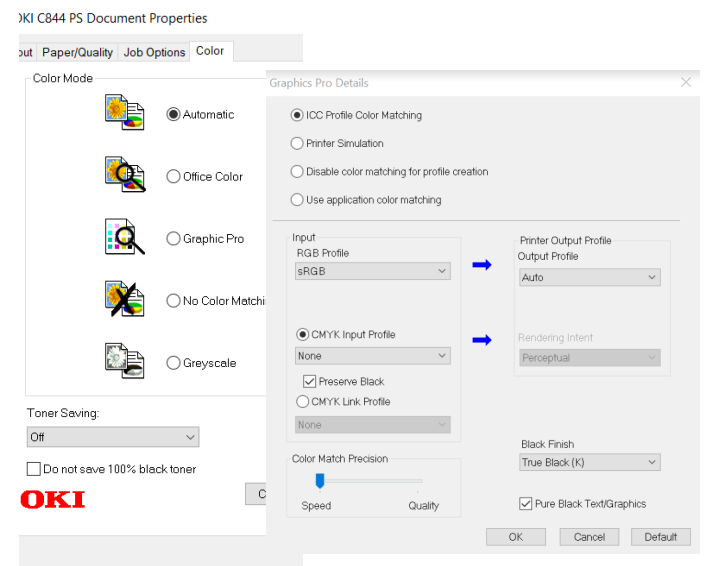
**8** Media Weight setting isn't required using CMF file and "USERTYPE 6" media type Please use "Printer Setting" as shown in picture



**9** Click Job Option tab to set «Quality» Normal(600x600)



**10** Click Colour Tab to set Colour Mode on «Graphic Pro» and «Toner Saving» on OFF Please also to use the setting of Graphic Mode as shown in the Picture



**11** Click OK to register the setting and return to the Adobe Reader DC print Interface

**12** Click «Print» button to send the data to the printer

