

# 8 x Ultra Heavy Duty Labels



## Media overview

Media Reference	MEDIA120
Supplier	Avery
Supplier Reference	B3427
Media Description	8 x Ultra Heavy Duty Labels
Key Properties	Teslin, waterproof, weatherproof, tearproof, adhesive, Temp Resistant (-40°C to +150°C)
Size	A4 (210 x 297 mm), Label (74 x 105 mm)
Weight	265 gsm
Thickness	0.265 mm
Warranty	See Media Statement
Vertical Markets	Chemical, Healthcare, Manufacturing
Print Application	Labelling, Chemical Labels for chemical containers, bags, plastic and glass
Print Sample	



MEDIA120 Avery Paint Pot Labels Sample.pdf

## 8 x Ultra Heavy Duty Labels



### Device Setup

Device	C650
Firmware Level	A01.50 or later
CMF version	Not required
Media Type	Labels
Media Weight	Ultra Heavy 3
Feeding Tray & Orientation	MPT (Multi Purpose Tray) SEF (Short Edge Feeding) Feed 1 by 1
Output Bin	Face-down (Output Tray)

**Main Limitations**  
*Please refer to the MEDIA Statement for all the details*

- The coating on the surface of the Media can occasionally cause sheets of Media to stick together and be fed through the paper path simultaneously. This can cause mis-feeds of the Media. If this happens please feed the Media one sheet at a time.
- Large curling may occur due to the paper construction of the labels.
- Only place one sheet at a time in the tray. If you do not do this you may get multiple feeds or mis-feeding of the media and the "mark" of pickup roller could be visible.
- The glue of the label may remain in the device. Please ensure that the device is cleaned regularly.
- Please ensure that the feeding roller is cleaned regularly due to the paper Powder generated during the printing process
- Mis-registration of approximately 200micro meters may occur suddenly. This is generally caused due to media thickness or surface properties.
- Pay attention to the PQ around the die-cut perforation. The PQ may deteriorate if you are printing close to and over them
- Horizontal shock-line may occur suddenly especially on solid colour background due to media thickness or surface properties.



MPT Feeding



Front Output Bin

# 8 x Ultra Heavy Duty Labels

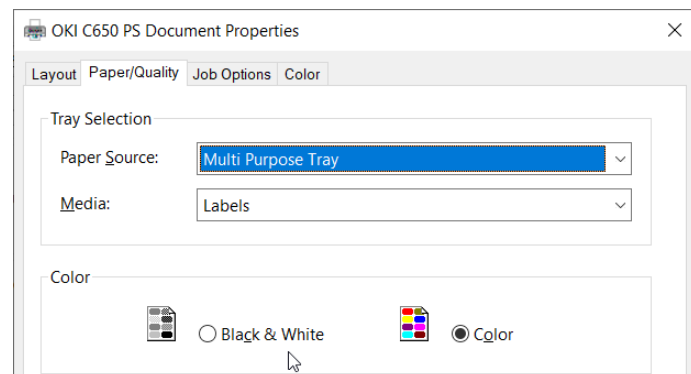
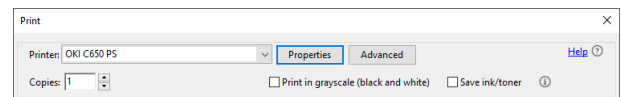
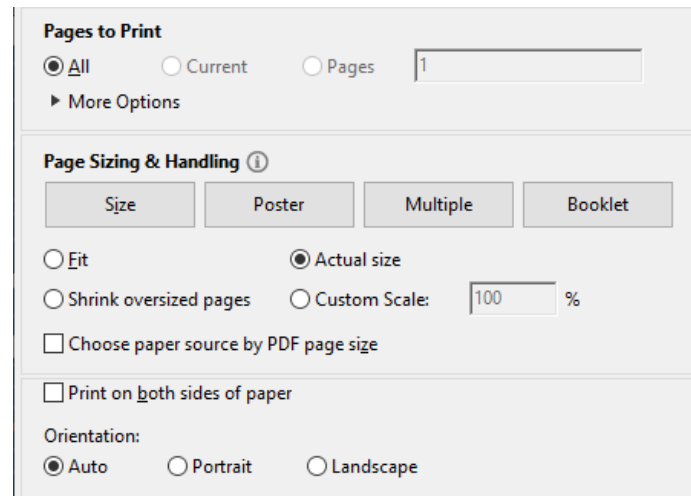


## Sample Printing Instructions

*These instructions are based on C650 model*

- 1 Driver**
- 2 Device setup and preparation**  
Open MPT tray and put the A4 media into the tray according to orientation described into «device setup» section
- 3 Printing the file**  
Open the PDF file with Acrobat Reader DC and click CTRL+P to open the PRINT interface
- 4 Select the C650 PS printer**
- 5 Configure the paper sizing & handling settings as show in the picture**
- 6 Click on Properties button to access to the PS driver settings**
- 7 Access to the Paper/Quality tab to configure Paper Source and Media Type according to the setting specified into «device setup» section**

Postscript Version 1.0.1



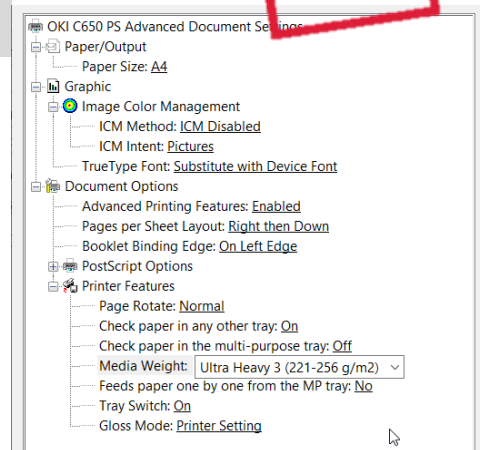
## 8 x Ultra Heavy Duty Labels



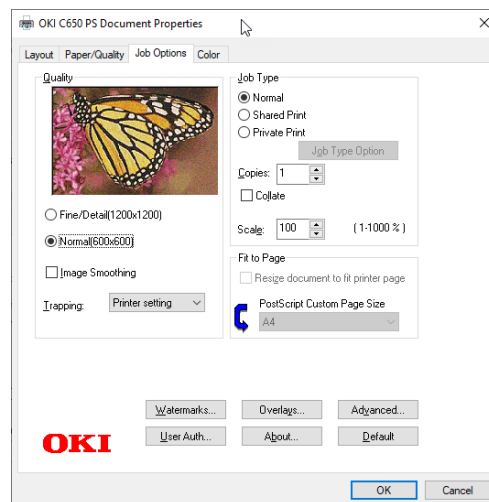
### Sample Printing Instructions

*These instructions are based on C650 model*

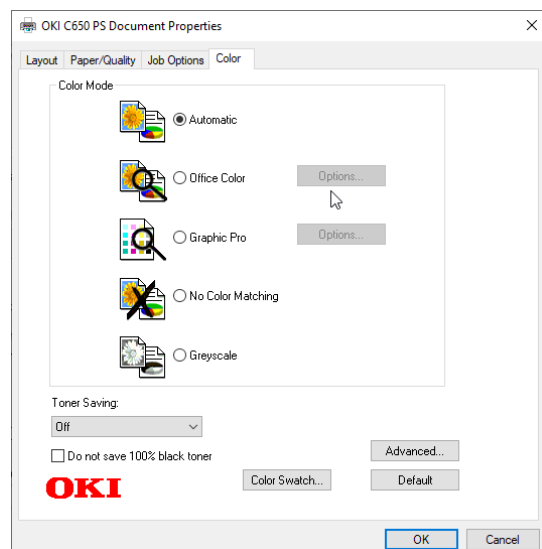
**8** Please click on Advanced button to access to the interface to setup the A4 as a Paper Size and Ultra Heavy 3 as a Media Weight. Next click OK to confirm the setting.



**9** Click Job Option tab to set «Quality» Normal(600x600)



**10** Click Colour Tab to set Colour Mode on «Automatic» and «Toner Saving» on OFF



**11** Click OK to register the setting and return to the Adobe Reader DC print Interface

**12** Click «Print» button to send the data to the printer

