

Heavy Duty White Polyester Labels



Media overview

OKI Media Reference	OKIMED16
Supplier	Avery
Supplier Reference	L4715
Media Description	Safety, warning and outdoor Labels - 8 on a sheet
Key Characteristics	Oil/dirt/UV/temp (-20 to +80oC) resistant, water/tearproof
Size	A4
Weight	
Thickness	0,19 mm
Warranty	See Media Statement for the details
IVP Media Proposition	Weather/Tear proof labels for out/indoor applications. Oil, dirt, UV & temperature resistant
IVP Print Applications	Product labelling for indoor/outdoor use

Media Samples



OKI CB44 (OKIMED16) Avery Heavy Duty Polyester Labels

Heavy Duty White Polyester Labels



Device Setup

Device	C824n, C824dn, C834nw, C834dnw, C844dnw
Firmware Level	A01.11_0_4 or later
CMF version	Not required
Media Type	PLAIN
Media Weight	UH2 (Ultra Heavy 2)
Feeding Tray & Orientation	MPT (Multi Purpose Tray) LEF (Short Edge Feeding)
Output Bin	Face-up (Rear Output)
Main Limitations <i>Please refer to the MEDIA Statement for all the details</i>	<p>The coating on the surface of the Media can occasionally cause sheets of Media to stick together and be fed through the paper path simultaneously. If this happens please feed the Media one sheet at a time.</p> <p>Media must be printed from the MP Tray only and exit to the Rear output tray.</p> <p>When printing a solid pattern, white dots may be visible.</p> <p>Print quality may not be as good around the perforations.</p> <p>If the image being printed goes across the perforation "dirty print" may occur on the printed output.</p> <p>Colour density, especially on solid patterns, may not be reduced and appear lighter.</p> <p>After printing on this Media, vertical lines or dirty print may occur. If your printout has these issues, please do not use the printer for a few hours and it may recover so that this issue no longer appears.</p> <p>Large curling may occur due to the paper construction of the labels.</p> <p>Mis-registration of approximately 200 micro meters may occur suddenly. This is generally caused due to media thickness or surface properties.</p>



MPT LEF Feeding



Face-up Rear Output

Heavy Duty White Polyester Labels



Sample Printing Instructions

These instructions are based on C844 model

1 Driver

2 Device setup and preparation

Open MPT tray and put the media into the tray according to orientation described into «device setup» section

3 Printing the file

Open the PDF file with Acrobat Reader DC and click CTRL+P to open the PRINT interface

4 Select the C844 PS printer

5 Configure the paper sizing & handling settings as show in the picture.

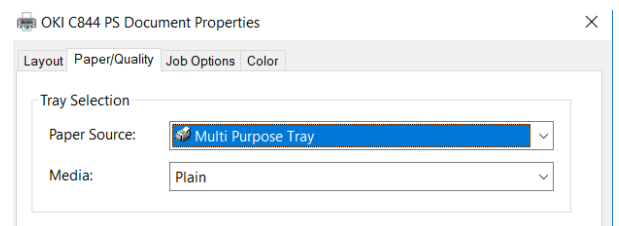
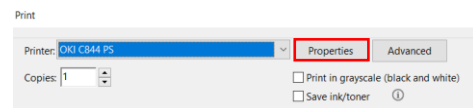
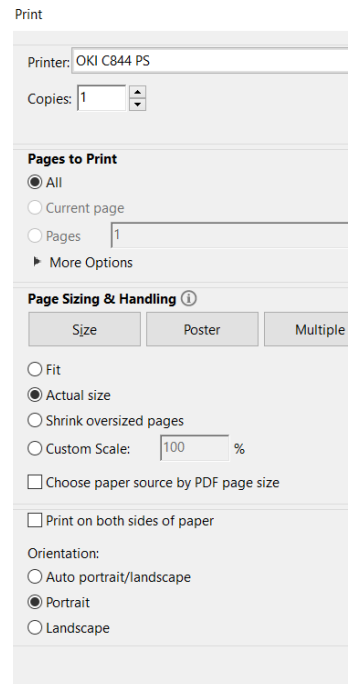
6 Click on Properties button to access to the PS driver settings

7 Access to the Paper/Quality tab to configure Paper Source and Media Type according to the setting specified into «device setup» section

Postscript Version 1.0.1



MPT SEF Feeding



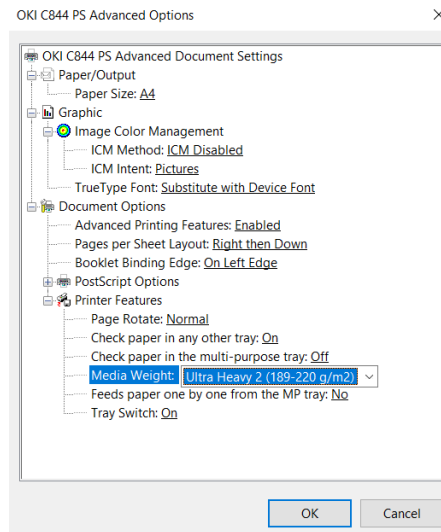
Heavy Duty White Polyester Labels



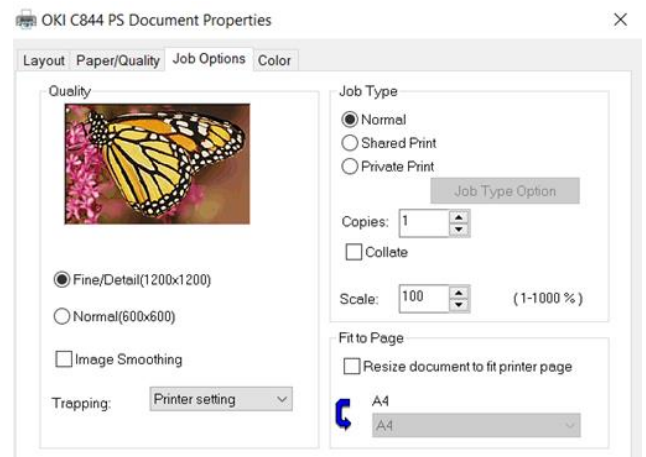
Sample Printing Instructions

These instructions are based on C844 model

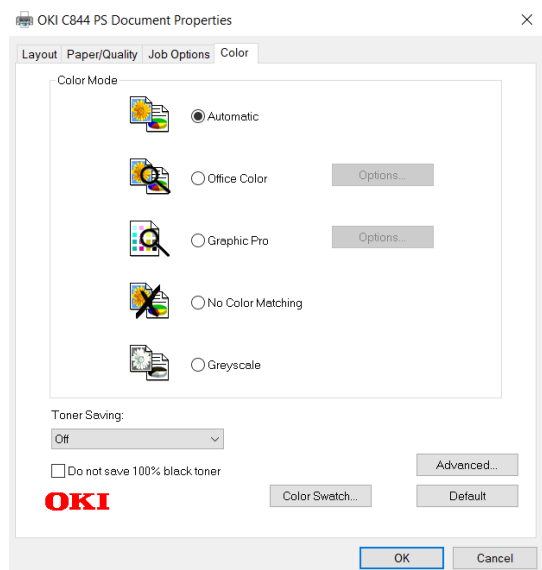
8 Please click on Advanced button to access to the interface to setup the Media Weight Ultra Heavy 2 (UH2) and click OK to confirm the setting



9 Click Job Option tab to set «Quality» on *Fine/Quality (1200x1200)*
Please note this setting is only available on C844dnw



10 Click Colour Tab to set Colour Mode on «Automatic» and «Toner Saving» on OFF



11 Click OK to register the setting and return to the Adobe Reader DC print Interface

12 Click «Print» button to send the data to the printer

