

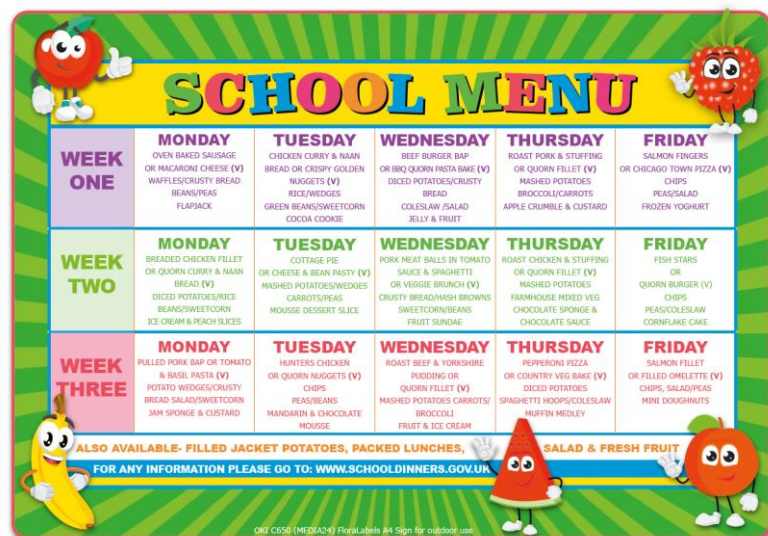
## A4 Sign for outdoor use



### Media overview

Media Reference	MEDIA24
Supplier	Floralabels
Supplier Reference	4213
Media Description	A4 Sign for outdoor use
Key Properties	Synthetic, waterproof, weatherproof, tearproof
Size	A4 (210 x 297 mm)
Weight	255 gsm
Thickness	0.195 mm
Warranty	See Media Statement
Vertical Markets	Retail, HoReCa, Education
Print Application	Signage, Product information card A4 Outdoor signage

### Print Sample



MEDIA24 Floralabels School Menu Sample.pdf

# A4 Sign for outdoor use



## Device Setup

Device	C650
Firmware Level	A01.50 or later
CMF version	02.00.25
Media Type	USERTYPE 2
Media Weight	Not required
Feeding Tray & Orientation	MPT (Multi Purpose Tray) SEF (Short Edge Feeding) Feed 1 by 1
Output Bin	Face-down (Top Output Tray) Stack 1 by 1
Main Limitations <i>Please refer to the MEDIA Statement for all the details</i>	<ul style="list-style-type: none"><li>• Please ensure that the feeding roller is cleaned regularly due to the paper Powder generated during the printing process</li><li>• Mis-registration of 200 micro meters may occur suddenly. This is generally caused due to media thickness or surface properties.</li><li>• The Mark of the "pickup" roller may appear feeding multiple sheets at the same time, please feed sheet 1 by 1 to avoid it.</li><li>• Due to electrostatic charges on the surface of the media, after printing collect printouts 10 by 10</li><li>• The PQ may deteriorate and horizontal shockline could appear printing solid background pattern</li><li>• Faded print could occur especially printing full solid colour background</li></ul>



MPT Feeding



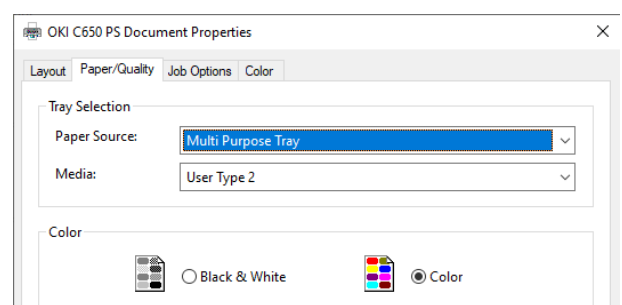
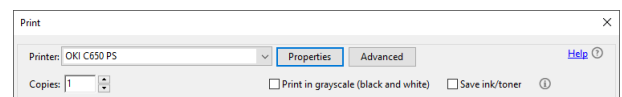
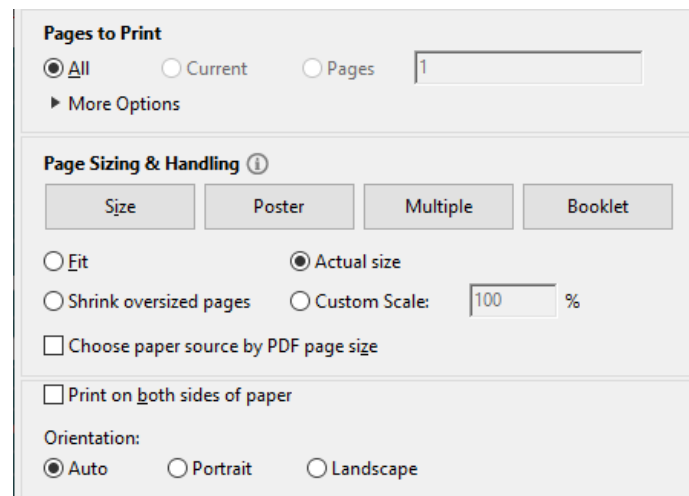
Top Tray Output

## Sample Printing Instructions

*These instructions are based on C650 model*

- 1 Driver**
- 2 Device setup and preparation**  
Open MPT tray and put the media into the tray according to orientation described into «device setup» section
- 3 Printing the file**  
Open the PDF file with Acrobat Reader DC and click CTRL+P to open the PRINT interface
- 4 Select the C650 PS printer**
- 5 Configure the paper sizing & handling settings as show in the picture**
- 6 Click on Properties button to access to the PS driver settings**
- 7 Access to the Paper/Quality tab to configure Paper Source and Media Type according to the setting specified into «device setup» section**

Postscript Version 1.0.1



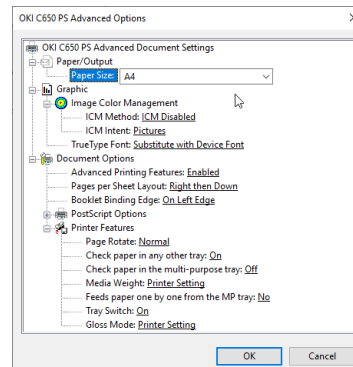
## A4 Sign for outdoor use



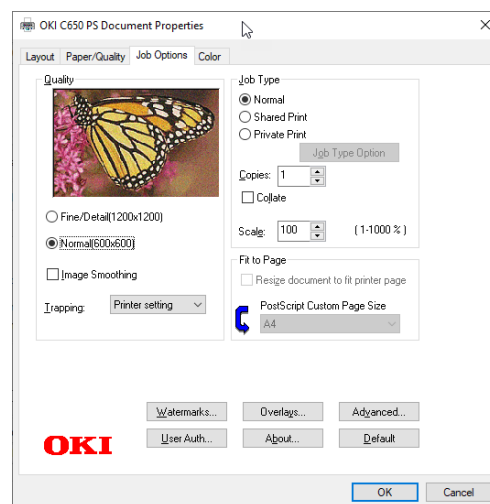
### Sample Printing Instructions *These instructions are based on C650 model*

- 8** Please click on Advanced button to access to the interface to check whether the Paper Size is set as A4 and click OK to confirm the setting

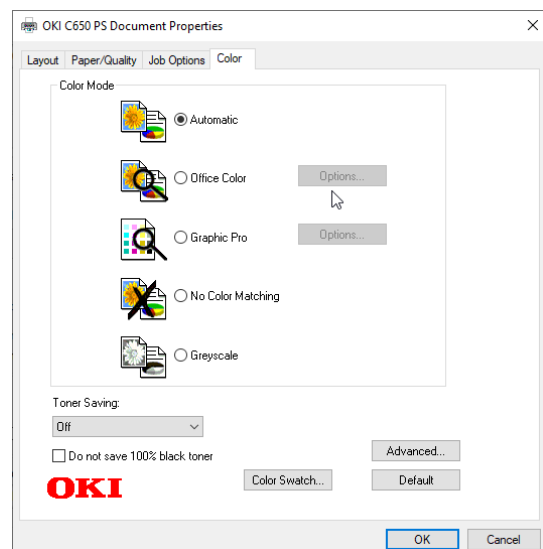
*Please note that using CMF file and «USERTYPE 2» media type the «media weight» setting isn't required*



- 9** Click Job Option tab to set «Quality» Normal(600x600)



- 10** Click Colour Tab to set Colour Mode on «Automatic» and «Toner Saving» on OFF



- 11** Click OK to register the setting and return to the Adobe Reader DC print Interface

- 12** Click «Print» button to send the data to the printer

