

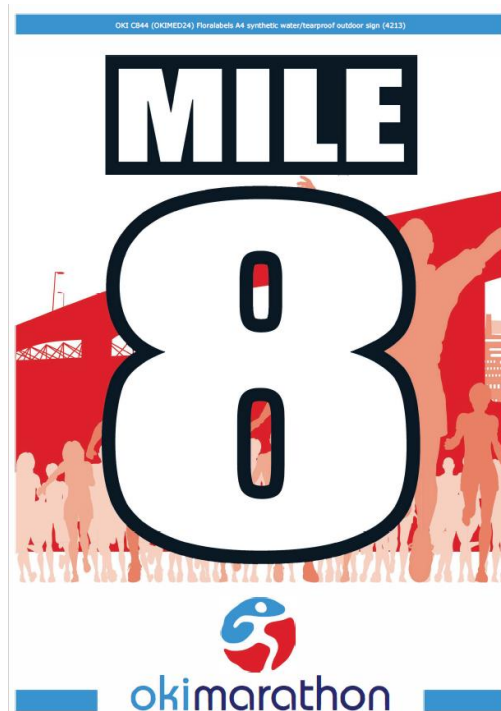
A4 Outdoor Waterproof Sign



Media overview

OKI Media Reference	OKIMED24
Manufacturer	Limo Labels
Supplier	Floralabels
Supplier Reference	4213
Media Description	A4 Outdoor Waterproof Sign
Key Characteristics	Synthetic, waterproof, tearproof, UV resistant
Size	A4
Weight	-
Thickness	0,23 mm
Warranty	See Media Statement for the details
IVP Media Proposition	A4 bed cards, water and tear resistant media for outdoor use. UV resistant
IVP Print Applications	Outdoor retail e.g. horticulture, retail, DIY, restaurants

Media Samples



OKIMED24 Floralabels Run Sign Sample.pdf

A4 Outdoor Waterproof Sign



Device Setup

Device	C824n, C824dn, C834nw, C834dnw, C844dnw
Firmware Level	A01.11_0_4 or later
CMF version	Not Required
Media Type	Transparency
Media Weight	UH3 (Ultra Heavy 3)
Additional Settings	TCS (Transparency Color Setting) +2 BLACK Color Density +3
Feeding Tray & Orientation	MPT (Multi Purpose Tray) LEF (Long Edge Feeding)
Output Bin	Face-up (Rear Output) Collect printouts 1 by 1
Main Limitations <i>Please refer to the MEDIA Statement for all the details</i>	<p>The coating on the surface of the Media can occasionally cause sheets of Media to stick together and be fed through the paper path simultaneously. If this happens please feed the Media one sheet at a time.</p> <p>Media must be printed from the MP Tray only and exit to the Rear output tray.</p> <p>The pickup roller may leave a visible mark at the top centre of every page being loaded. To avoid this mark, please feed the Media one sheet at a time.</p> <p>When printing a sold pattern, white dots may be visible.</p> <p>Mis-registration of approximately 200micro meters may occur suddenly. This is generally caused due to media thickness or surface properties.</p> <p>We recommend taking sheets one by one from the output tray otherwise the media may stick together due to static electricity.</p>



MPT and LEF Feeding



Face-up – Rear Output

A4 Outdoor Waterproof Sign



Sample Printing Instructions *These instructions are based on C844 model*

1 Driver

2 Device setup and preparation

Open MPT tray and put the media into the tray according to orientation described into «device setup» section

Set **Transparency Color Setting** to the value «+2» and **Black Color Density** to the value «+3» as described into «device setup» section.

The settings on the display panel of the printer is shown in the pictures

3 Printing the file

Open the PDF file with Acrobat Reader DC and click CTRL+P to open the PRINT interface

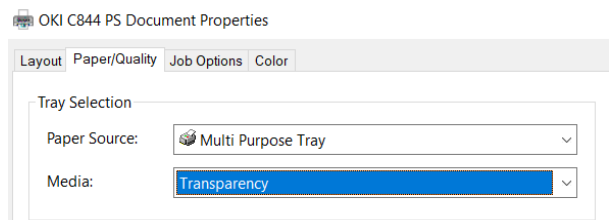
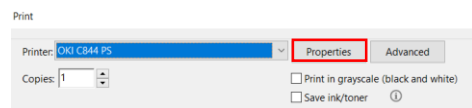
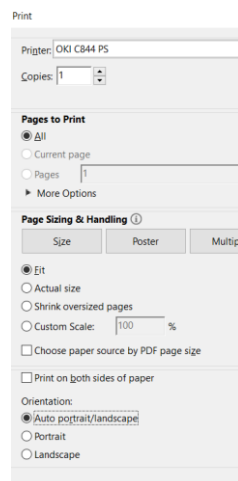
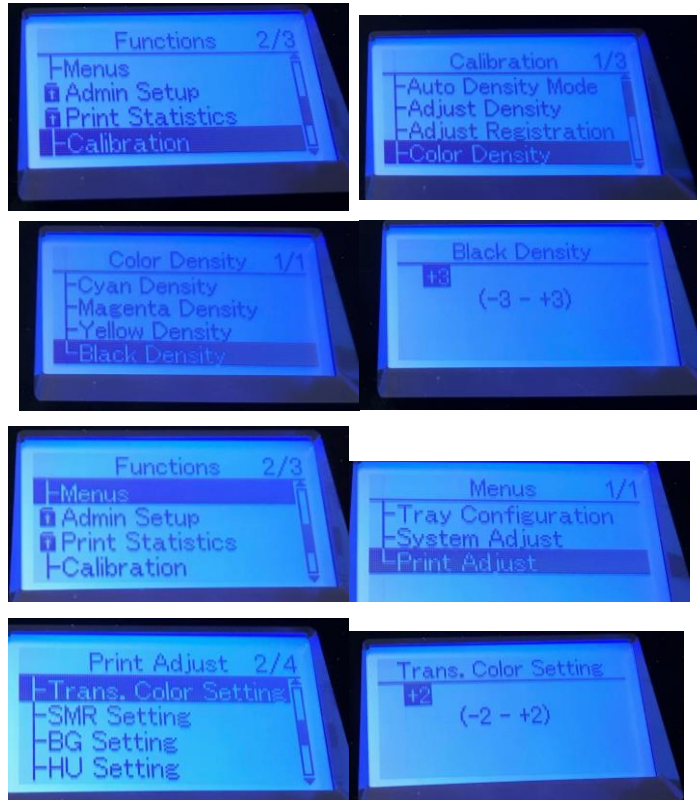
4 Select the C844 PS printer

5 Configure the paper sizing & handling settings as show in the picture.

6 Click on Properties button to access to the PS driver settings

7 Access to the Paper/Quality tab to configure Paper Source and Media Type according to the setting specified into «device setup» section

Postscript Version 1.0.1

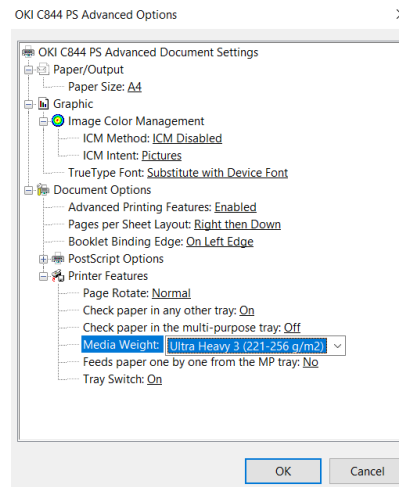


A4 Outdoor Waterproof Sign

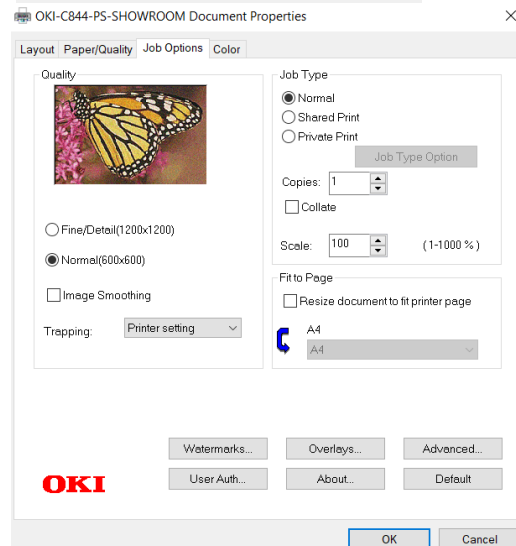


Sample Printing Instructions *These instructions are based on C844 model*

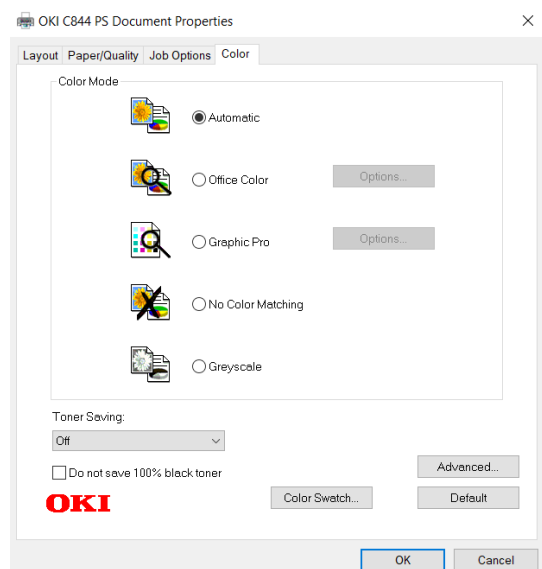
8 Please click on Advanced button to access to the interface to setup the Media Size and Media Weight Ultra Heavy 3 (UH3)



9 Click Job Option tab to set «Quality» Normal(600x600)



10 Click Colour Tab to set Colour Mode on «Automatic» and «Toner Saving» on OFF



11 Click OK to register the setting and return to the Adobe Reader DC print Interface

12 Click «Print» button to send the data to the printer

