

Waterproof Synthetic Outdoor Banner



Media overview

OKI Media Reference	OKIMED29
Manufacturer	Limo Labels
Supplier	Floralabels
Supplier Reference	3071
Media Description	Waterproof Synthetic Outdoor Banner
Key Characteristics	Synthetic, water/tearproof, UV resistant (297x1200mm)
Size	Custom 297 x 1200 mm
Weight	-
Thickness	0,31 mm
Warranty	See Media Statement for the details
IVP Media Proposition	Waterproof and tear resistant A3 banners
IVP Print Applications	Waterproof Banner media for outdoor signage applications

Media Samples



Waterproof Synthetic Outdoor Banner



Device Setup

Device	C824n, C824dn, C834nw, C834dnw, C844dnw
Firmware Level	A01.11_0_4 or later
CMF version	Not Required
Media Type	PLAIN
Media Weight	UH3 (Ultra Heavy 3)
Additional Settings	
Feeding Tray & Orientation	MPT (Multi Purpose Tray)
Output Bin	Face-up (Rear Output) Collect printouts 1 by 1
Limitations	The coating on the surface of the Media can occasionally cause sheets of Media to stick together and be fed through the paper path simultaneously. This can cause mis-feeds of the Media. If this happens please feed the Media one sheet at a time. Media must be printed from the MP Tray only and exit to the Rear output tray.



MPT Feeding

Waterproof Synthetic Outdoor Banner



Sample Printing Instructions *These instructions are based on C844 model*

- 1 Driver**
- 2 Device setup and preparation**
Open MPT tray and put the media into the tray according to orientation described into «device setup» section
- 3 Printing the file**
Open the PDF file with Acrobat Reader DC and click CTRL+P to open the PRINT interface
- 4 Select the C844 PS printer**
- 5 Configure the paper sizing & handling settings as show in the picture.**
- 6 Click on Properties button to access to the PS driver settings**
- 7 Access to the Paper/Quality tab to configure Paper Source and Media Type according to the setting specified into «device setup» section**

Postscript Version 1.0.1



MPT Feeding

Print

Printer: OKI C844 PS

Copies: 1

Pages to Print

All

Current page

Pages: 1

► More Options

Page Sizing & Handling ⓘ

Size Poster Multiple

Fit

Actual size

Shrink oversized pages

Custom Scale: 100 %

Choose paper source by PDF page size

Use custom paper size when needed

Print on both sides of paper

Orientation:

Auto portrait/landscape

Portrait

Landscape

Print

Printer: OKI C844 PS Properties Advanced

Copies: 1

Print in grayscale (black and white)

Save ink/toner ⓘ

Layout Paper/Quality Job Options Color

Tray Selection

Paper Source: Multi Purpose Tray

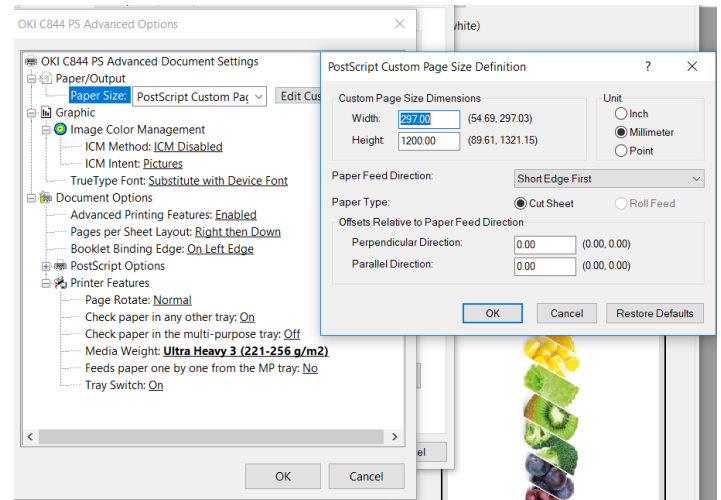
Media: Plain

Waterproof Synthetic Outdoor Banner

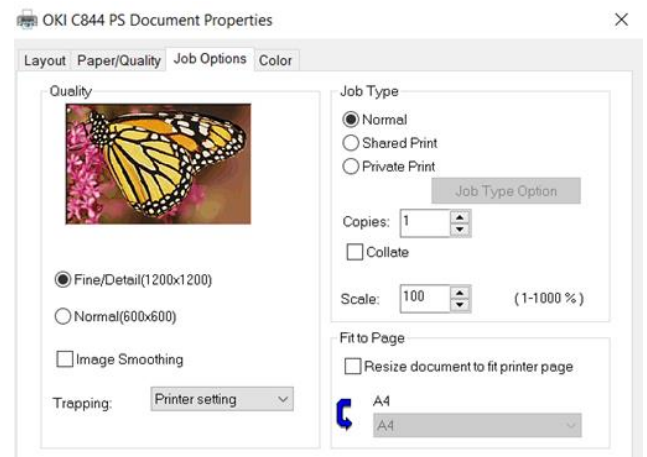


Sample Printing Instructions *These instructions are based on C844 model*

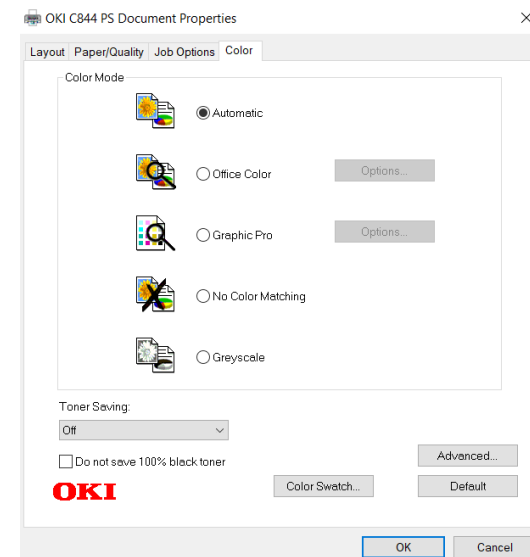
8 Please click on Advanced button to access to the interface to setup the Custom Size (297mm x 1200mm) and Media Weight and click OK to confirm the setting



9 Click Job Option tab to set «Quality» *Fine/Detail (1200x1200)* [only for the C844dnw]



10 Click Colour Tab to set Colour Mode on «Automatic» and «Toner Saving» on OFF



11 Click OK to register the setting and return to the Adobe Reader DC print Interface

12 Click «Print» button to send the data to the printer

