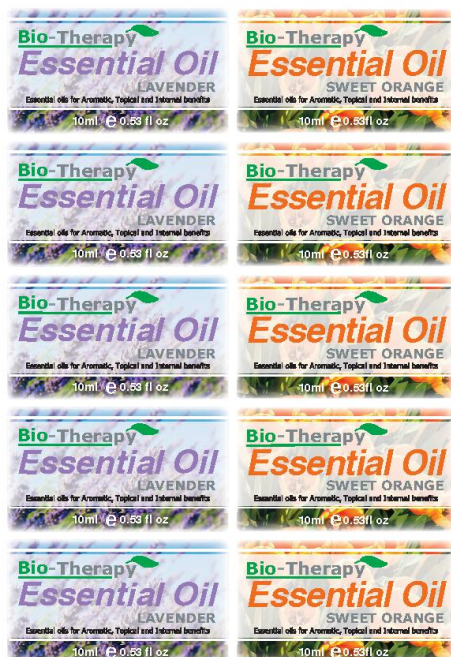


Media overview

Media Reference	MEDIA31
Supplier	Floralabels
Supplier Reference	3007
Media Description	Self-adhesive labels
Key Properties	Synthetic, waterproof, weatherproof, tearproof, adhesive
Size	A4 (210 x 297 mm) Label (97.5 x 57 mm)
Weight	245 gsm
Thickness	0.28 mm
Warranty	See Media Statement
Vertical Markets	Manufacturing, Healthcare, Retail
Print Application	Labelling, Branding Labelling Outdoor product labeling

Print Sample



Device Setup

Device	C650
Firmware Level	A01.50 or later
CMF version	02.00.25(see CMF section for details on CMF)
Media Type	USERTYPE 2
Media Weight	Not required
Feeding Tray & Orientation	MPT (Multi Purpose Tray) SEF (Short Edge Feeding) Feed 1 by 1
Output Bin	Face-down (Output Tray)

Main Limitations

Please refer to the MEDIA Statement for all the details

- The “mark” of the pickup roller could be visible feeding multiple sheets at the same time, to avoid please feed sheet 1 by 1.
- The glue of the label may remain in the device. Please ensure that the device is cleaned regularly
- Curling over 30mm may occur due to the paper construction of the labels.
- Mis-registration of 250 micro meters may occur suddenly. This is generally caused due to media thickness or surface properties.
- Horizontal shock-line may occur suddenly especially on solid colour background due to media thickness or surface properties
- Pay attention to the PQ around the die-cut perforation. The PQ may deteriorate if you are printing close to and over them



MPT Feeding



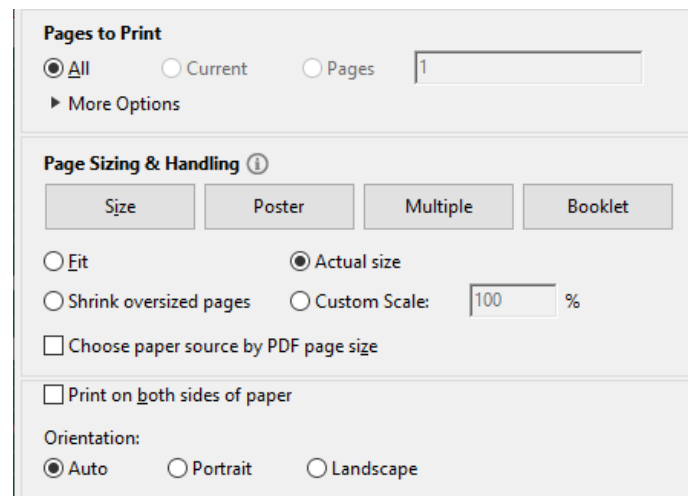
Top Tray Output

Sample Printing Instructions

These instructions are based on C650 model

- 1 Driver**
- 2 Device setup and preparation**
Open MPT tray and put the A4 media into the tray according to orientation described into «device setup» section
- 3 Printing the file**
Open the PDF file with Acrobat Reader DC and click CTRL+P to open the PRINT interface
- 4 Select the C650 PS printer**
- 5 Configure the paper sizing & handling settings as show in the picture**
- 6 Click on Properties button to access to the PS driver settings**
- 7 Access to the Paper/Quality tab to configure Paper Source and Media Type according to the setting specified into «device setup» section**

Postscript Version 1.0.1



Pages to Print
 All Current Pages
▶ More Options

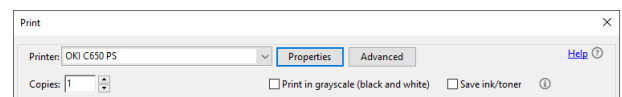
Page Sizing & Handling ⓘ

Size Poster Multiple Booklet

Fit Actual size
 Shrink oversized pages Custom Scale: %
 Choose paper source by PDF page size

Print on both sides of paper

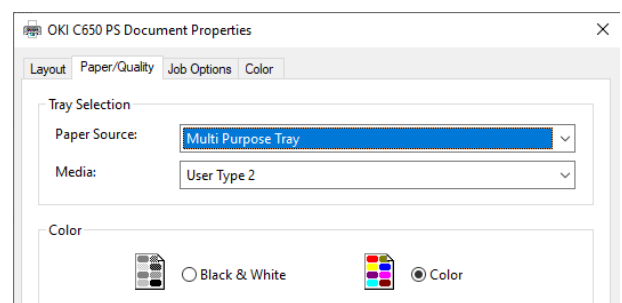
Orientation:
 Auto Portrait Landscape



Print

Printer: OKI C650 PS Properties Advanced Help ⓘ

Copies: Print in grayscale (black and white) Save ink/toner ⓘ



OKI C650 PS Document Properties

Layout Paper/Quality Job Options Color

Tray Selection
Paper Source:
Media:

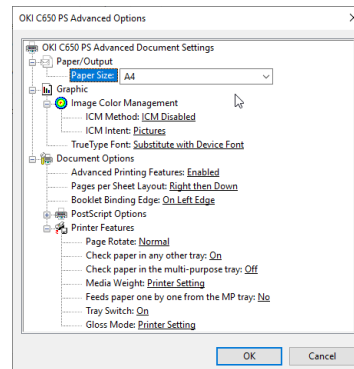
Color
 Black & White Color

Sample Printing Instructions

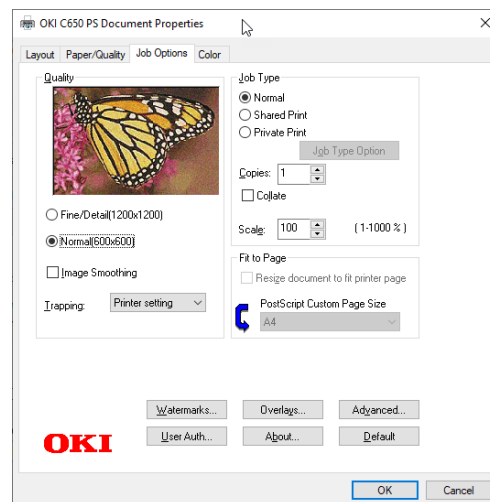
These instructions are based on C650 model

- 8** Please click on Advanced button to access to the interface to check whether the Paper Size is set as A4 and click OK to confirm the setting

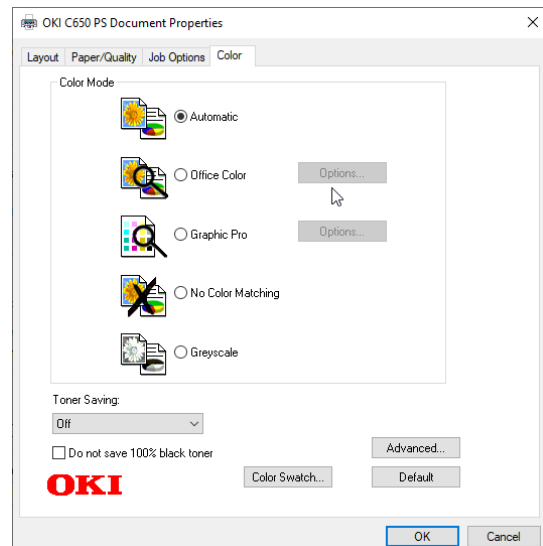
Please note that using CMF file and «USERTYPE 2» media type the «media weight» setting isn't required



- 9** Click Job Option tab to set «Quality» Normal(600x600)



- 10** Click Colour Tab to set Colour Mode on «Automatic» and «Toner Saving» on OFF



- 11** Click OK to register the setting and return to the Adobe Reader DC print Interface

- 12** Click «Print» button to send the data to the printer

