

Media overview

OKI Media Reference	OKIMED31
Manufacturer	Limo Labels
Supplier	Floralabels
Supplier Reference	3007
Media Description	Self Adhesive Waterproof Labels
Key Characteristics	Synthetic, water/tearproof, UV resistant, 97x57mm
Size	A4
Weight	-
Thickness	0,32 mm
Warranty	See Media Statement for the details
IVP Media Proposition	Self-adhesive waterproof labels
IVP Print Applications	Outdoor labeling, retail, horticulture, DIY, chemicals

Media Samples



Self Adhesive Waterproof Labels



Device Setup

Device	C824n, C824dn, C834nw, C834dnw, C844dnw
Firmware Level	A01.11_0_4 or later
CMF version	01.02.04 or later
Media Type	USERTYPE 2
Media Weight	N/A
Additional Settings	
Feeding Tray & Orientation	MPT (Multi Purpose Tray) LEF (Long Edge Feeding)
Output Bin	Face-up (Rear Output)
Main Limitations <i>Please refer to the MEDIA Statement for all the details</i>	<p>The coating on the surface of the Media can occasionally cause sheets of Media to stick together and be fed through the paper path simultaneously. If this happens please feed the Media one sheet at a time.</p> <p>Media must be printed from the MP Tray only and exit to the Rear output tray.</p> <p>The pickup roller may leave a visible mark at the top centre of every page being loaded. To avoid this mark, please feed the Media one sheet at a time.</p> <p>Mis-registration of approximately 300micro meters may occur suddenly. This is generally caused due to media thickness or surface properties.</p> <p>Please load a maximum of 10 sheets at a time or paper Jams may occur</p>



MPT and LEF Feeding



Face-up – Rear Output

Self Adhesive Waterproof Labels



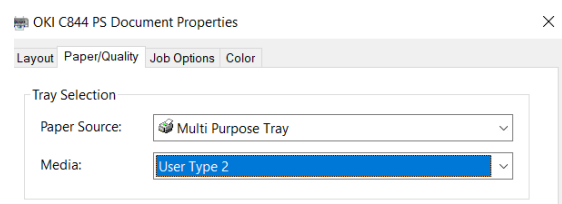
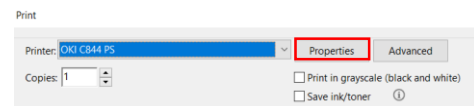
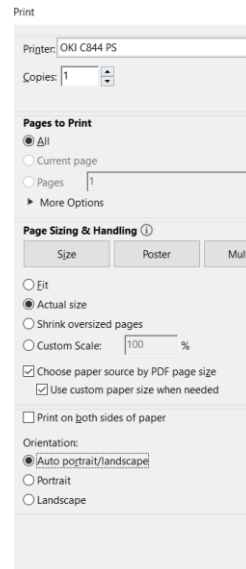
Sample Printing Instructions *These instructions are based on C844 model*

- 1 Driver**
- 2 Device setup and preparation**
Open MPT tray and put the media into the tray according to orientation described into «device setup» section
- 3 Printing the file**
Open the PDF file with Acrobat Reader DC and click CTRL+P to open the PRINT interface
- 4 Select the C844 PS printer**
- 5 Configure the paper sizing & handling settings as show in the picture.**
- 6 Click on Properties button to access to the PS driver settings**
- 7 Access to the Paper/Quality tab to configure Paper Source and Media Type according to the setting specified into «device setup» section**

Postscript Version 1.0.1



MPT and LEF Feeding



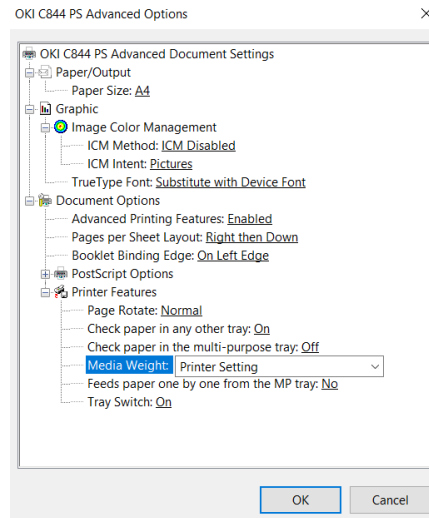
Self Adhesive Waterproof Labels



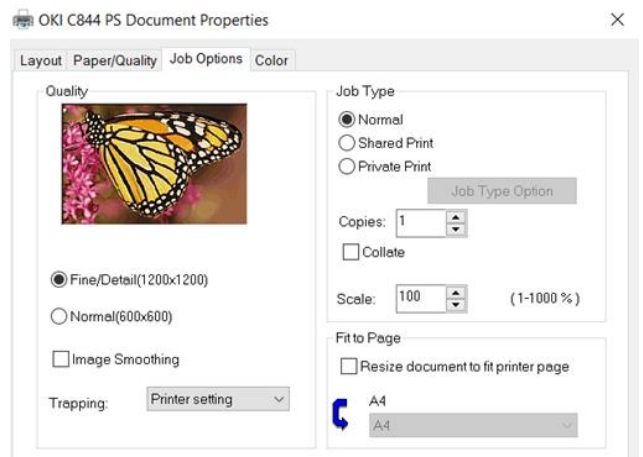
Sample Printing Instructions *These instructions are based on C844 model*

- 8** Please click on Advanced button to access to the interface to setup the Media Size

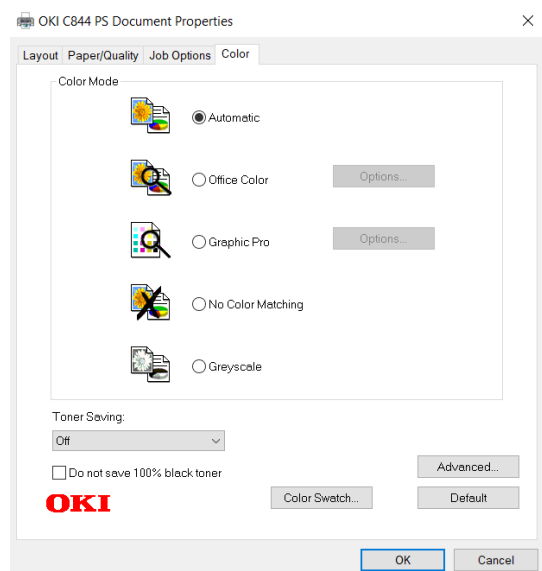
*Please note that Media Weight setting isn't required using CMF file and "USERTYPE 2" media type
Please use "Printer Setting" as shown in picture*



- 9** Click Job Option tab to set «Quality» *Fine/Detail (1200x1200)* [only for the C844dnw]



- 10** Click Colour Tab to set Colour Mode on «Automatic» and «Toner Saving» on OFF



- 11** Click OK to register the setting and return to the Adobe Reader DC print Interface

- 12** Click «Print» button to send the data to the printer

