

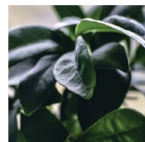
Pre-perforated Waterproof Pot Labels



Media overview

OKI Media Reference	OKIMED53
Manufacturer	Felga
Supplier	Felga
Supplier Reference	EP1640
Media Description	Pre-perforated Waterproof Pot Labels
Key Characteristics	PET water/tearproof, UV resist, 40x160mm
Size	Custom 200mm x 160 mm
Weight	-
Thickness	0,20 mm
Warranty	See Media Statement for the details
IVP Media Proposition	High-strength suited for use outside withstanding strong UV radiation and heavy rain.
IVP Print Applications	Outdoor plant pot labelling in variable outdoor conditions

Media Samples



FIGUS

12,90€



ROSE

12,90€



FERN

6,90€



BOUGAINVILLEA

7,90€



ERBA

8,90€



OKIMED53 Felga Pot Labels Sample.pdf

Device Setup

Device	C824n, C824dn, C834nw, C834dnw, C844dnw
Firmware Level	A01.11_0_4 or later
CMF version	01.E1.01
Media Type	USERTYPE 6 Requires Custom Media File (CMF) installation. All information about CMF is available on OKI Partnernet. Please contact your OKI partner.
Media Weight	N/A
Feeding Tray & Orientation	MPT (Multi Purpose Tray) SEF (Short Edge Feeding)
Output Bin	Face-up (Rear Output)
Main Limitations <i>Please refer to the MEDIA Statement for all the details</i>	<p>The coating on the surface of the Media can occasionally cause sheets of Media to stick together and be fed through the paper path simultaneously. If this happens please feed the Media one sheet at a time.</p> <p>When recovering from a Printer Jam, please be careful not to catch the holes in the Media on the paper sensor lever of the device, as it may break the sensor. To prevent this happening, when removing jammed Media, please pull the Media in the normal paper handling direction. Media must be printed from the MP Tray only and exit to the Rear output tray.</p> <p>The pickup roller may leave a visible mark at the top centre of every page being loaded. To avoid this mark, please feed the Media one sheet at a time.</p> <p>If printing approximately more than 10 sheets continually, the printing speed may slow down for the device to adjust the fuser temperature. After printing on this Media, vertical lines or dirty print may occur. If your printout has these issues, please do not use the printer for a few hours and it may recover so that this issue no longer appears. We recommend taking sheets one by one from the output tray otherwise the media may curl in the tray due to weak stiffness of perforation</p>



MPT and SEF Feeding



Face-up – Rear Output

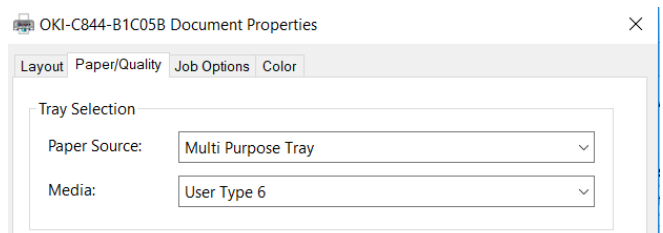
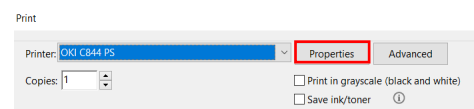
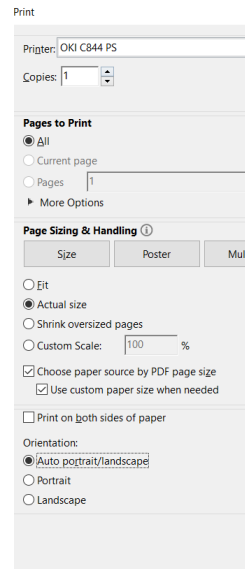
Sample Printing Instructions *These instructions are based on C844 model*

- 1 Driver**
- 2 Device setup and preparation**
Open MPT tray and put the media into the tray according to orientation described into «device setup» section
- 3 Printing the file**
Open the PDF file with Acrobat Reader DC and click CTRL+P to open the PRINT interface
- 4 Select the C844 PS printer**
- 5 Configure the paper sizing & handling settings as show in the picture.**
- 6 Click on Properties button to access to the PS driver settings**
- 7 Access to the Paper/Quality tab to configure Paper Source and Media Type according to the setting specified into «device setup» section**

Postscript Version 1.0.1



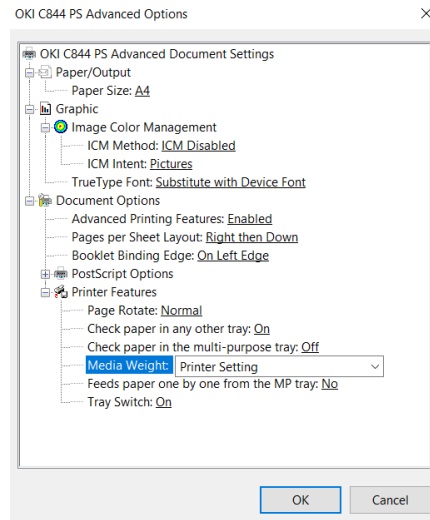
MPT and SEF Feeding



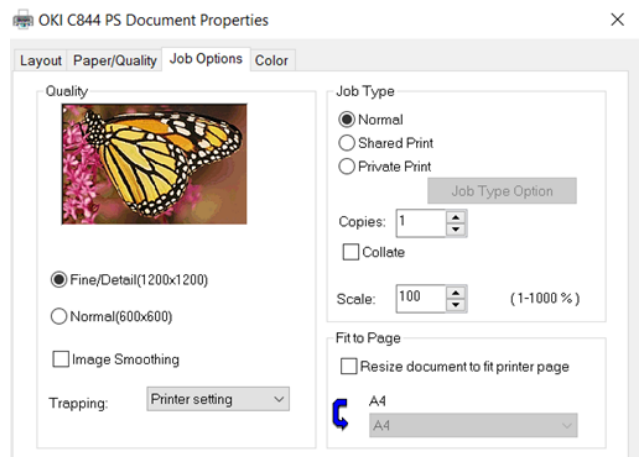
Sample Printing Instructions These instructions are based on C844 model

8 Please click on Advanced button to access to the interface to setup the Media Size

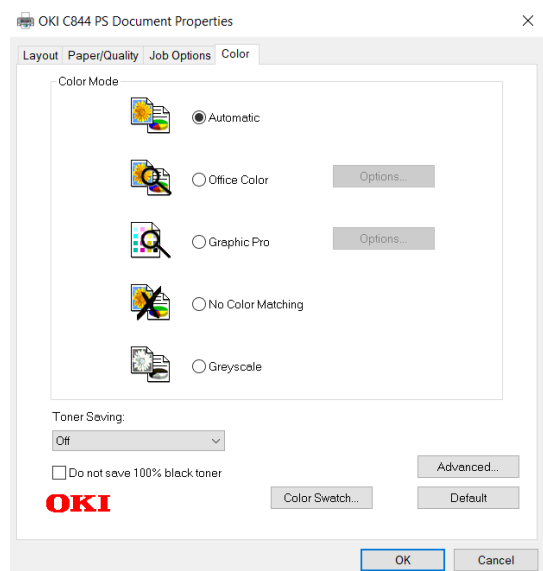
*Please note that Media Weight setting isn't required using CMF file and "USERTYPE 6" media type
Please use "Printer Setting" as shown in picture*



9 Click Job Option tab to set «Quality» Fine/Detail (1200x1200) [only for the C844dnw]



10 Click Colour Tab to set Colour Mode on «Automatic» and «Toner Saving» on OFF



11 Click OK to register the setting and return to the Adobe Reader DC print Interface

12 Click «Print» button to send the data to the printer

