

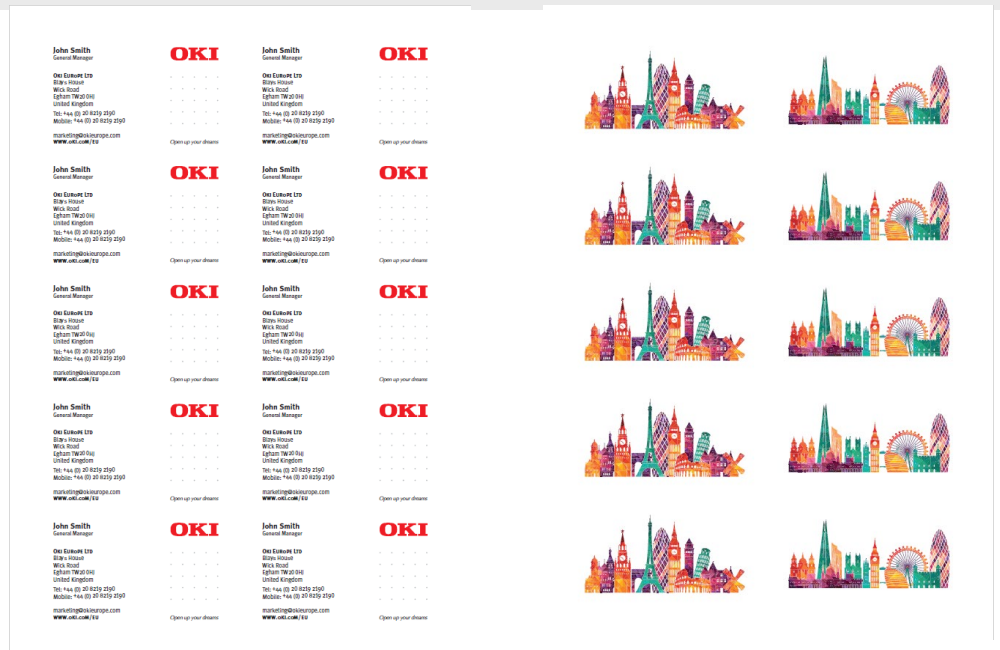
Double Sided Business Cards



Media overview

OKI Media Reference	OKIMED78
Supplier	Avery
Supplier Reference	C32016-25
Media Description	Double Sided Business Cards
Key Characteristics	Satin finish, Quick@Clean technology for smooth edges
Size	A4
Weight	220gsm
Thickness	0,25 mm
Warranty	See Media Statement for the details
IVP Media Proposition	
IVP Print Applications	Business cards, RSVPs, loyalty cards

Media Samples



OKIMED78 Avery Double Sided Business Cards Sample.pdf FRONT

OKIMED78 Avery Double Sided Business Cards Sample.pdf.pdf BACK

Double Sided Business Cards



Device Setup	
Device	C824n, C824dn, C834nw, C834dnw, C844dnw
Firmware Level	A01.11_0_4 or later
CMF version	03.E1.03
Media Type	USERTYPE 18 Requires Custom Media File (CMF) installation. All information about CMF is available on OKI Partnernet. Please contact your OKI partner.
Media Weight	N/A
Feeding Tray & Orientation	MPT (Multi Purpose Tray) LEF (Long Edge Feeding) Manual Duplex (see pictures for the media orientation)
Output Bin	Face-up (Rear Output)
Main Limitations <i>Please refer to the MEDIA Statement for all the details</i>	Media must be printed from the MP Tray only and exit to the Rear output tray. Only place one sheet at a time in the tray. If you do not do this you may get multiple feeds or mis-feeding of the media. We recommend taking sheets one by one from the output tray otherwise the media may fall from the output tray. Print quality may not be as good around the perforations. If the image being printed goes across the perforation "dirty print" may occur on the printed output. Mis-registration of approximately 200micro meters may occur suddenly



MPT and LEF Feeding FRONT



MPT and LEF Feeding BACK



Face-up – Rear Output FRONT



Face-up – Rear Output BACK

Double Sided Business Cards



Sample Printing Instructions *These instructions are based on C844 model*

1 Driver

2 Device setup and preparation

Open MPT tray and put the media into the tray according to orientation described into «device setup» section

Please note that this file is printed with MANUAL DUPLEX option so in the pictures are shown both the setting for FRONT and BACK

3 Printing the file

Open the PDF file with Acrobat Reader DC and click CTRL+P to open the PRINT interface

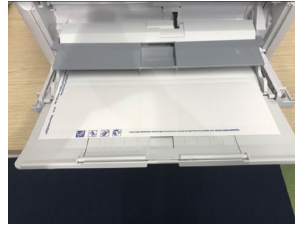
4 Select the C844 PS printer

5 Configure the paper sizing & handling settings as show in the picture. Please note that this sample is printed with «MANUAL DUPLEX» option To print FRONT select Page 1 To Print BACK select Page 2

6 Click on Properties button to access to the PS driver settings

7 Access to the Paper/Quality tab to configure Paper Source and Media Type according to the setting specified into «device setup» section

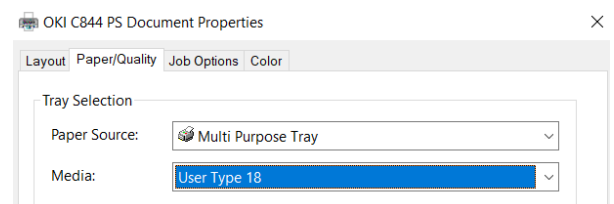
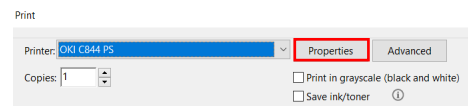
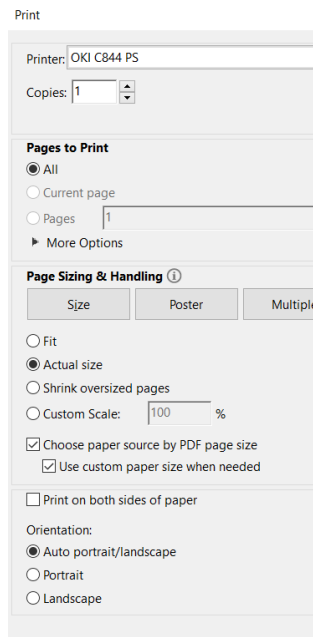
Postscript Version 1.0.1



MPT and LEF Feeding FRONT



MPT and LEF Feeding BACK

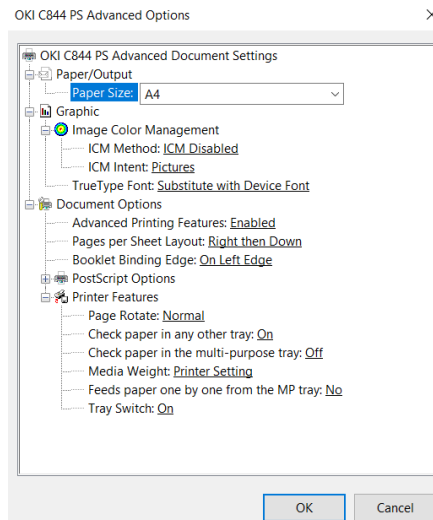


Double Sided Business Cards

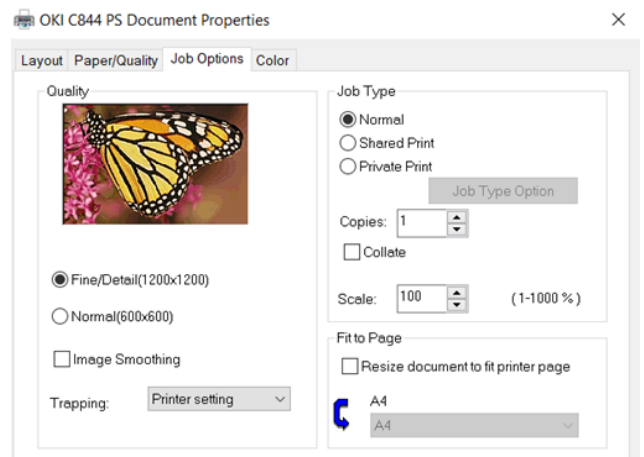


Sample Printing Instructions *These instructions are based on C844 model*

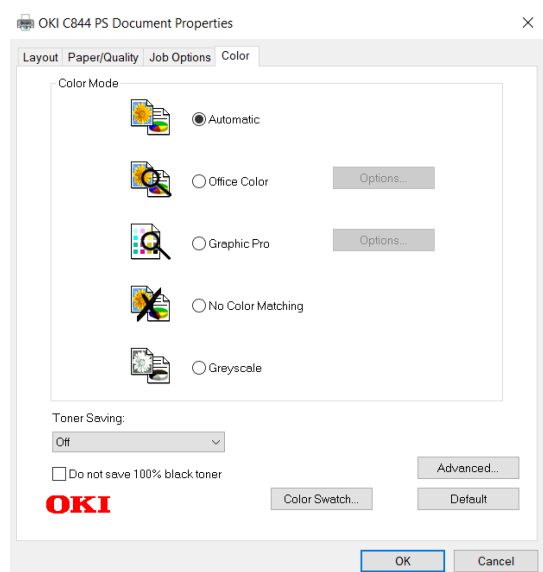
8 Please click on Advanced button to access to the interface to setup the Media Weight and click OK to confirm the setting



9 Click Job Option tab to set «Quality» *Fine/Details(1200x1200)* [only for C844dnw]



10 Click Colour Tab to set Colour Mode on «Automatic» and «Toner Saving» on OFF



11 Click OK to register the setting and return to the Adobe Reader DC print Interface

12 Click «Print» button to send the data to the printer

