

Media overview

Media Reference	MEDIA89
Supplier	OKI
Supplier Reference	9004651
Media Description	A4 Banner Paper
Key Properties	Matt white, printable both sides, 160gsm
Size	Custom (210 x 900 mm)
Weight	160gsm
Thickness	0.021 mm
Warranty	See Media Statement
Vertical Markets	Retail, HoReCa, Education, Healthcare
Print Application	Signage, Banner (Standing/Hanging Banner/Posters) Signage applications for retail

Print Sample



Device Setup

Device	C650
Firmware Level	A01.50 or later
CMF version	Not required
Media Type	Plain
Media Weight	Ultra Heavy 2
Feeding Tray & Orientation	MPT (Multi Purpose Tray) SEF (Short Edge Feeding)
Output Bin	Face-down (Output Tray)
Main Limitations <i>Please refer to the MEDIA Statement for all the details</i>	<ul style="list-style-type: none">• Please ensure that the feeding roller is cleaned regularly due to the paper Powder generated during the printing process• Mis-registration over 120micro meters may occur suddenly. This is generally caused due to media thickness or surface properties.• PQ may deteriorate printing full color solid background especially with black• Horizontal Shockline may be slightly visible



MPT Feeding



Front Output Bin

Sample Printing Instructions

These instructions are based on C650 model

1 Driver

Postscript Version 1.0.1

2 Device setup and preparation

Open MPT tray and put the banner into the tray according to orientation described into «device setup» section



3 Printing the file

Open the PDF file with Acrobat Reader DC and click CTRL+P to open the PRINT interface

4 Select the C650 PS printer

5 Configure the paper sizing & handling settings as show in the picture

Pages to Print
 All Current Pages
▶ More Options

Page Sizing & Handling ⓘ

Size Poster Multiple Booklet

Fit Actual size
 Shrink oversized pages Custom Scale: %
 Choose paper source by PDF page size

Print on both sides of paper

Orientation:
 Auto Portrait Landscape

6 Click on Properties button to access to the PS driver settings

Print

Printer: OKI C650 PS [Properties](#) [Advanced](#) [Help](#) ⓘ

Copies: 1

Print in grayscale (black and white) Save ink/toner ⓘ

7 Access to the Paper/Quality tab to configure Paper Source and Media Type according to the setting specified into «device setup» section

OKI C650 PS Document Properties

Layout Paper/Quality Job Options Color

Tray Selection

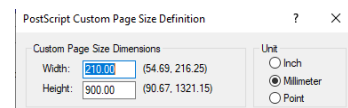
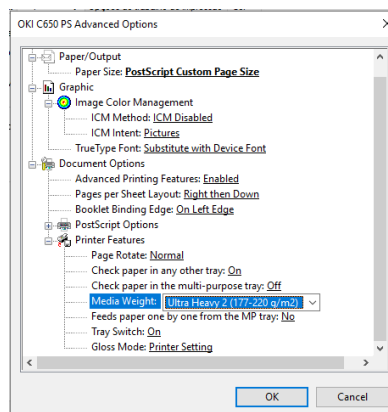
Paper Source: Multi Purpose Tray

Media: Plain

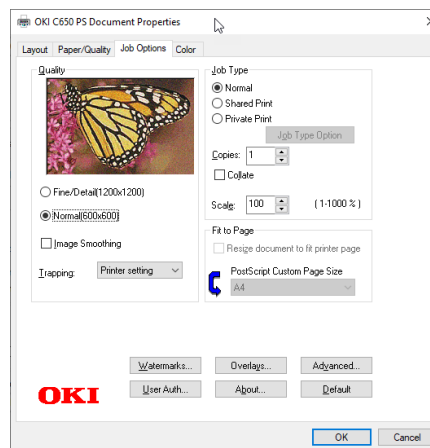
Sample Printing Instructions

These instructions are based on C650 model

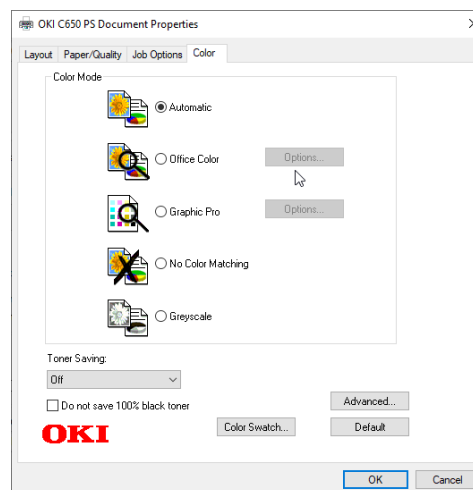
8 Please click on Advanced button to access to the interface to setup 210x900 as Custom Paper Size and Ultra Heavy 2 as Media Weight. Next click OK to confirm the setting.



9 Click Job Option tab to set «Quality» Normal(600x600)



10 Click Colour Tab to set Colour Mode on «Automatic» and «Toner Saving» on OFF



11 Click OK to register the setting and return to the Adobe Reader DC print Interface

12 Click «Print» button to send the data to the printer

